



**Kuwait-Scotland**  
eHEALTH INNOVATION NETWORK

Kuwait Health Network  
Summary (Clinic) Report

\*\* The data used in this report is anonymised/scrambled KHN data \*\*

---

**Date:** Saturday 22<sup>nd</sup> February, 2014

**Author:** Data Science Team, Aridhia Informatics

---



# List of Figures

1.1	Type 1 Diabetes by Age Group	4
1.2	Type 2 Diabetes by Age Group	4
1.3	Nationality Breakdown	5
1.4	Gender Breakdown	5
1.5	Body Mass Index	6
1.6	Blood Pressure	6
1.7	HbA1c Categories	7
1.8	Total Cholesterol	7
1.9	LDL Cholesterol	8
1.10	Estimated Glomerular Filtration Rate (eGFR)	8
1.11	Urine Albumin Creatinine Ratio (UACR)	9
1.12	Smoking	9
1.13	Alcohol	10
1.14	Physical Activity	10
2.1	Blood Pressure Over Time	12
2.2	HbA1c Over Time	13
2.3	BMI Over Time	14





## Summary

Number of registered patients with diabetes is : **2,006**

### • Patient Demographics:

Breakdown by Type of Diabetes	Previous*	Current
Type 1	1.5% (30)	1.4% (28)
Type 2	97.8% (1,994)	97.9% (1,964)
Other Type	0.69% (14)	0.7% (14)
Breakdown by Gender	Previous*	Current
Male	55% (1,121)	55.3% (1,110)
Female	45% (917)	44.7% (896)
Unknown or not recorded	0% (0)	0% (0)
Breakdown by Nationality	Previous*	Current
Kuwaiti	41.8% (851)	41.3% (829)
Non Kuwaiti	57.2% (1,166)	57.7% (1,157)
Unknown, other or not recorded	1% (21)	1% (20)

### • Patients with a clinical outcome recorded in the past 15 months :

Clinical Outcome	Previous*	Current	Change
BMI	31.2% (636)	30.1% (604)	↓
BP	44.2% (901)	36.2% (726)	↓
HbA1c	56.6% (1,153)	52.5% (1,054)	↓
Total Cholesterol	29% (592)	27.1% (543)	↓
LDL Cholesterol	27.3% (556)	25.5% (512)	↓
eGFR	37.4% (762)	34.8% (699)	↓
UACR	2.5% (50)	2.5% (50)	↓
Smoking Status	68.8% (1,403)	68.5% (1,375)	↓
Alcohol	29% (592)	28.6% (573)	↓
Physical Activity	4.1% (83)	4.3% (86)	↓

\* Current date is 22-Feb-2014; Previous date is 22-Aug-2013 (ie. 6 months prior to Current)



## Chapter 1

# Patient Demographic and Clinical Outcome Graphs

- The following section shows the breakdown of the patient demographic and clinical outcome metrics
- They are based on most recent data
- The graphs in this section show the national average as a black circle with the 95% confidence interval as a bar either side of the national average - we are 95% confident that the range between the upper and lower limits of each bar will contain the average. Larger numbers give us greater confidence and so the range narrows accordingly. If the graph shows that your clinic's values fall somewhere in the range of the 95% confidence interval, then you can be reasonably confident that your clinic is similar to the national average. Similarly, if your clinic is above or below the 95% confidence range then you can be reasonably confident that your clinic's results are significantly greater than or less than the national average.



Figure 1.1: Type 1 Diabetes by Age Group

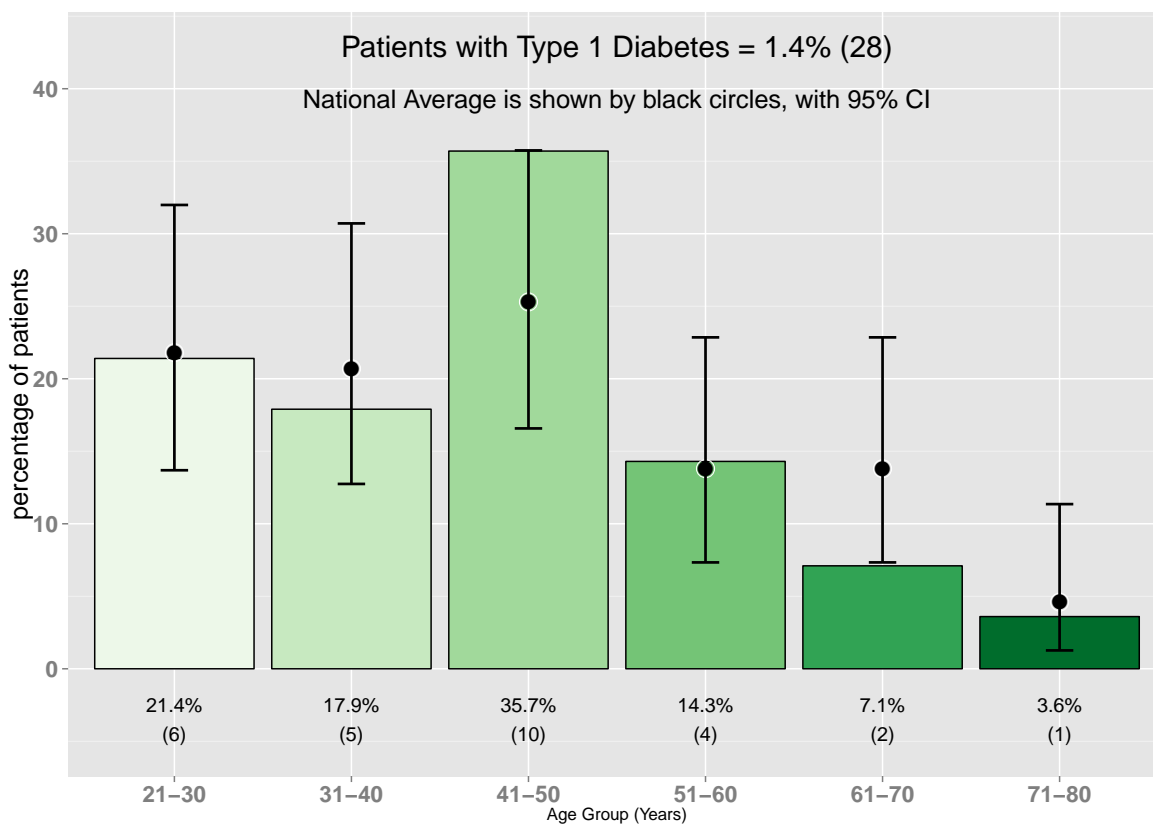


Figure 1.2: Type 2 Diabetes by Age Group

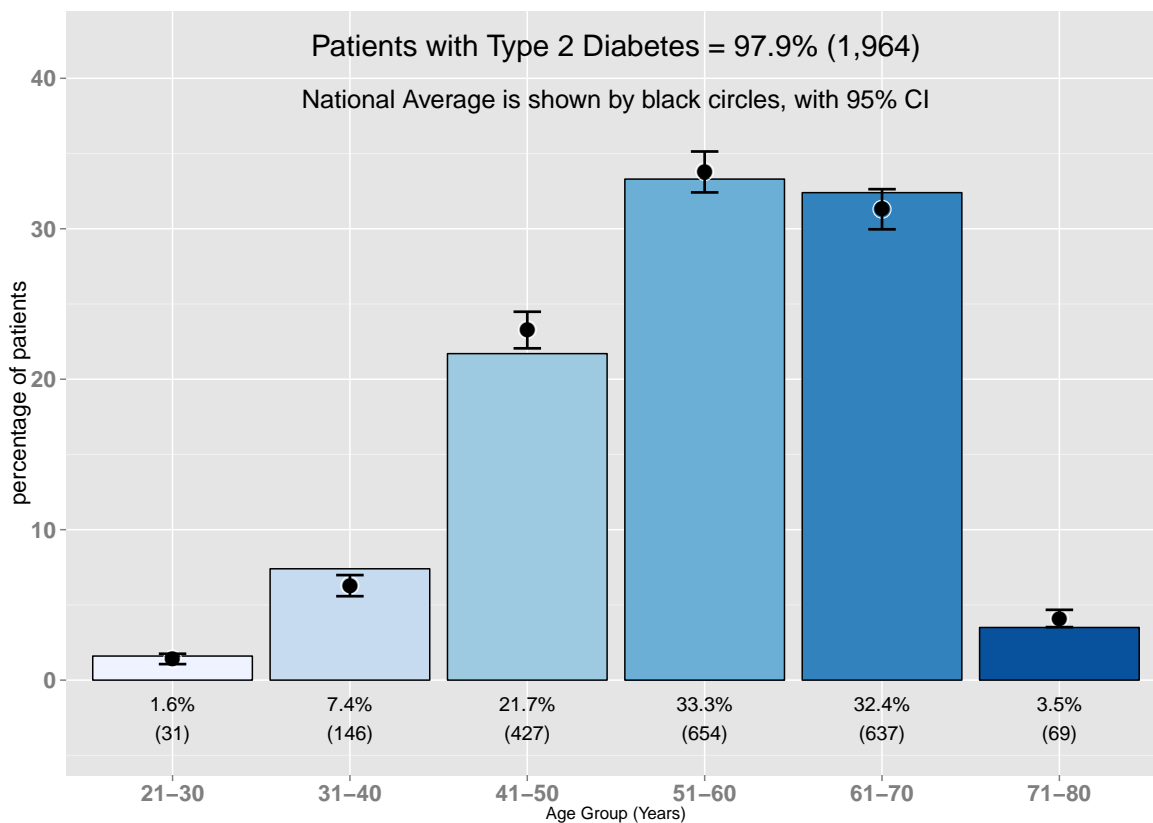




Figure 1.3: Nationality Breakdown

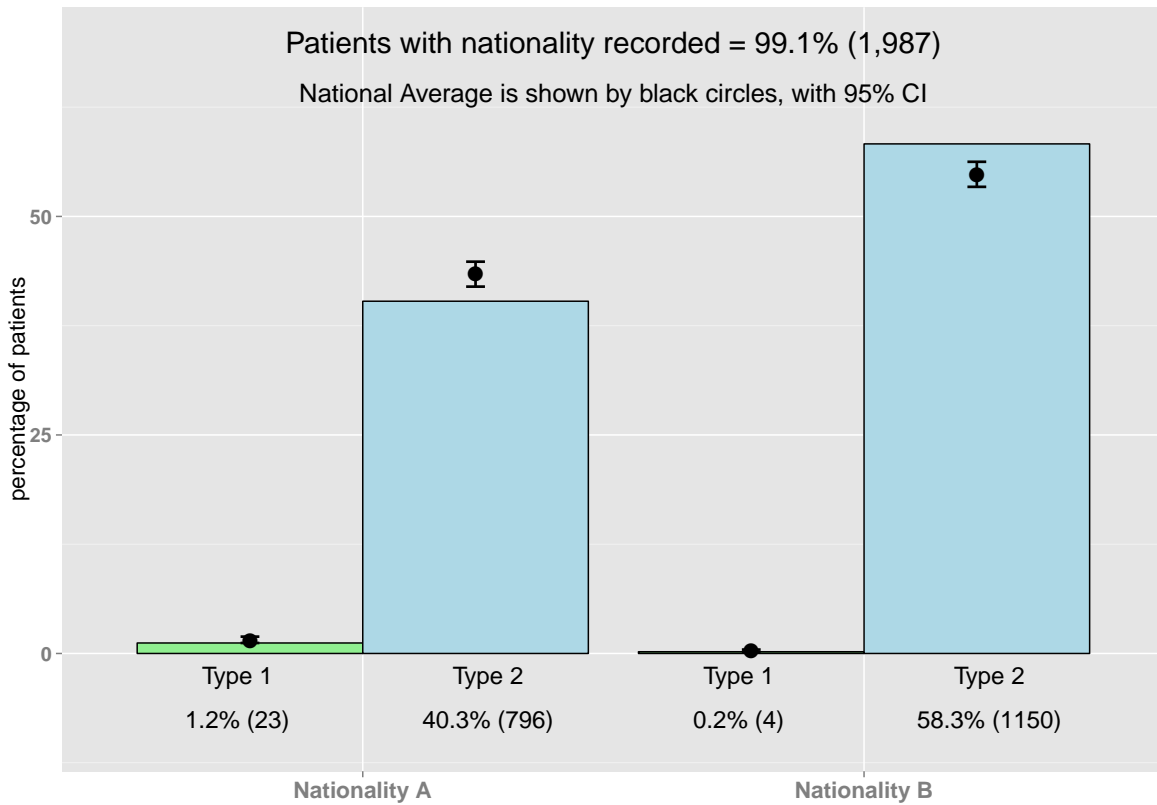


Figure 1.4: Gender Breakdown

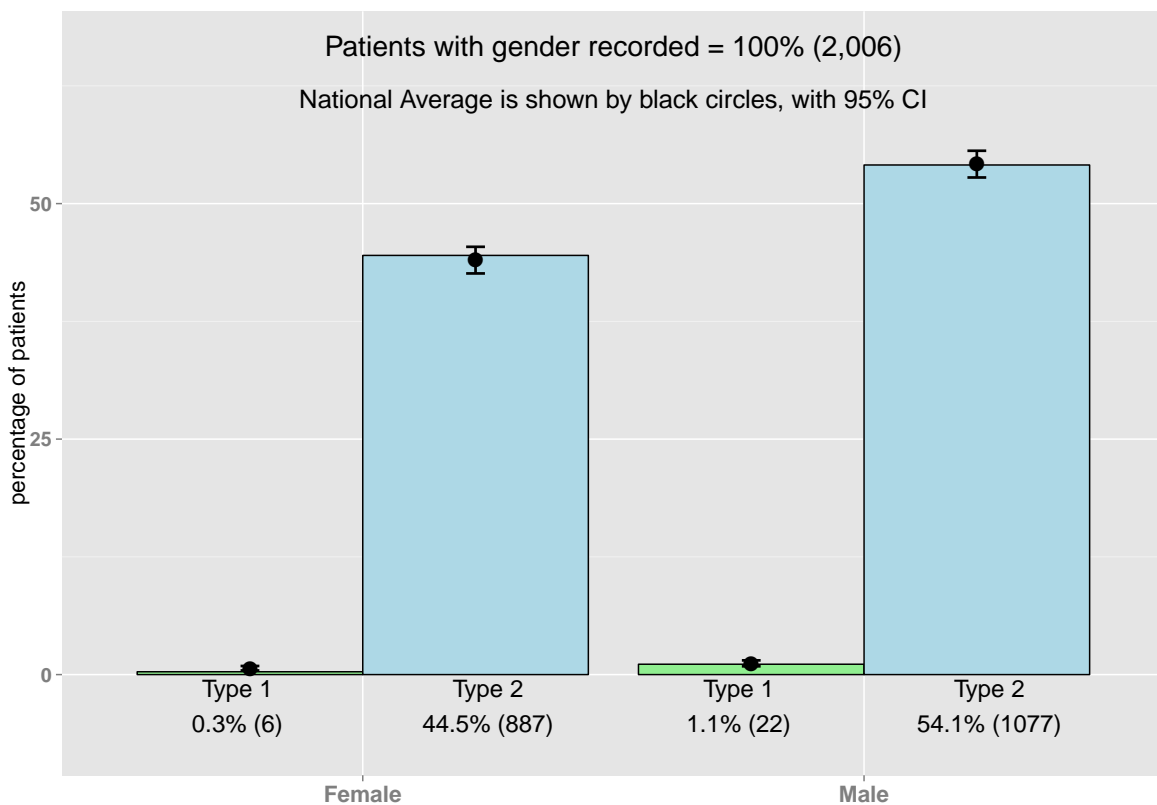




Figure 1.5: Body Mass Index

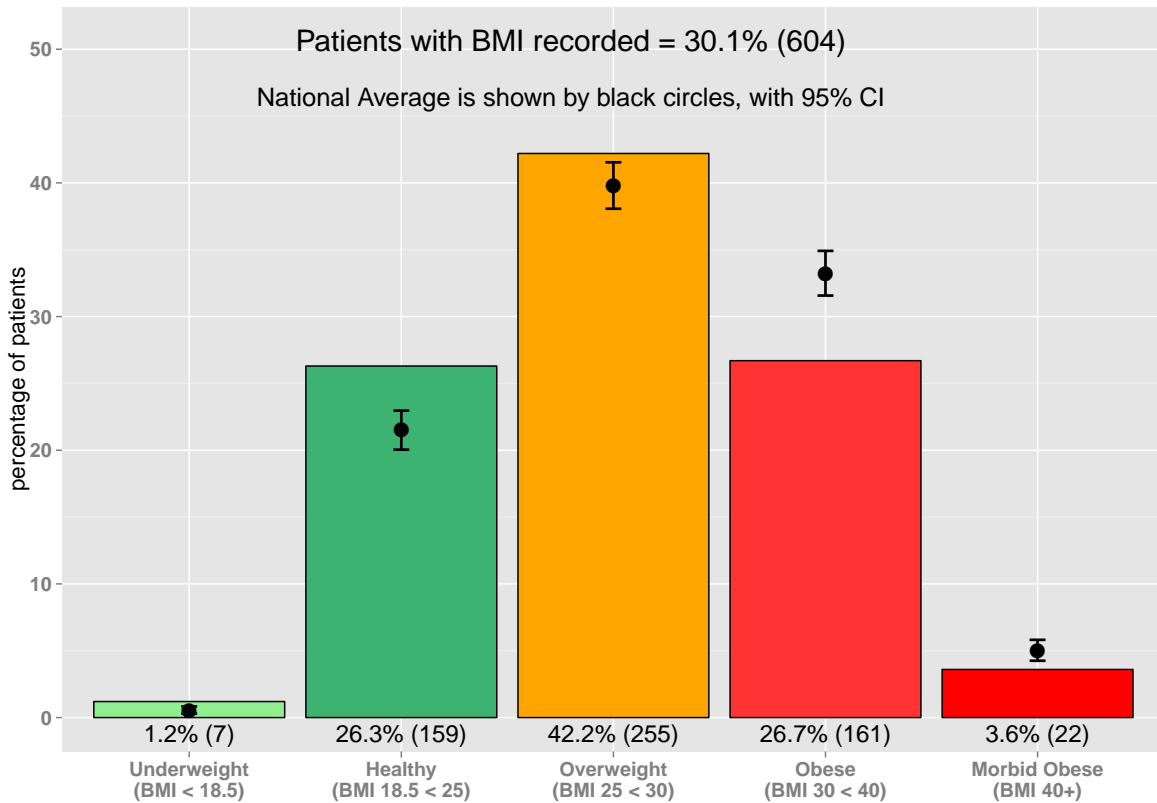
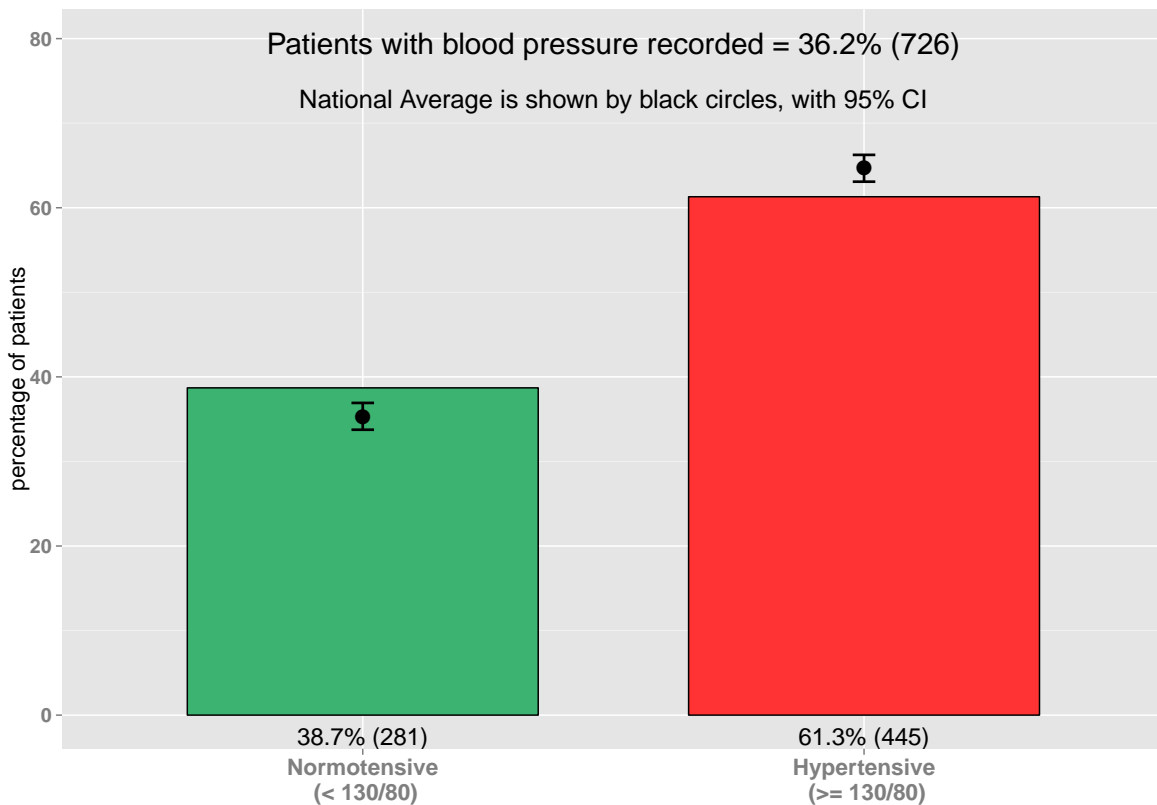


Figure 1.6: Blood Pressure



Normotensive is defined as patients with a systolic BP < 130 and diastolic BP < 80  
Hypertensive is defined as patients with a systolic BP >= 130 or diastolic BP >= 80



Figure 1.7: HbA1c Categories

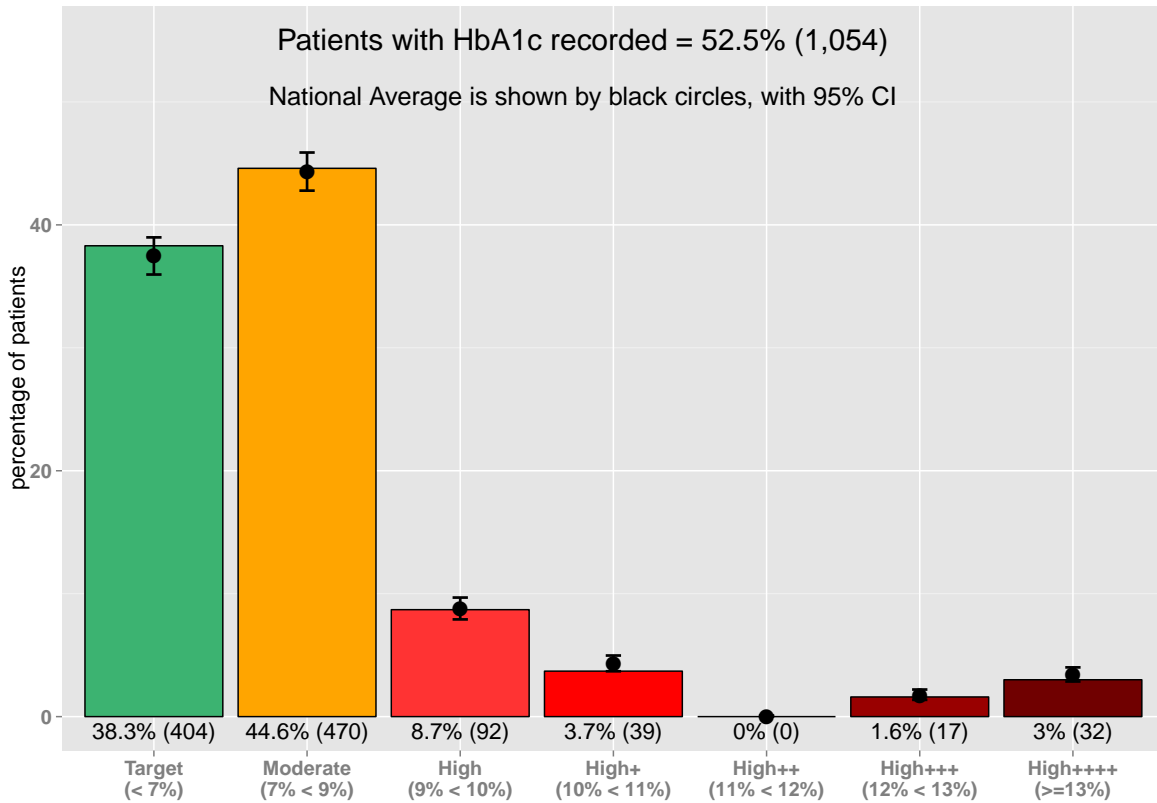


Figure 1.8: Total Cholesterol

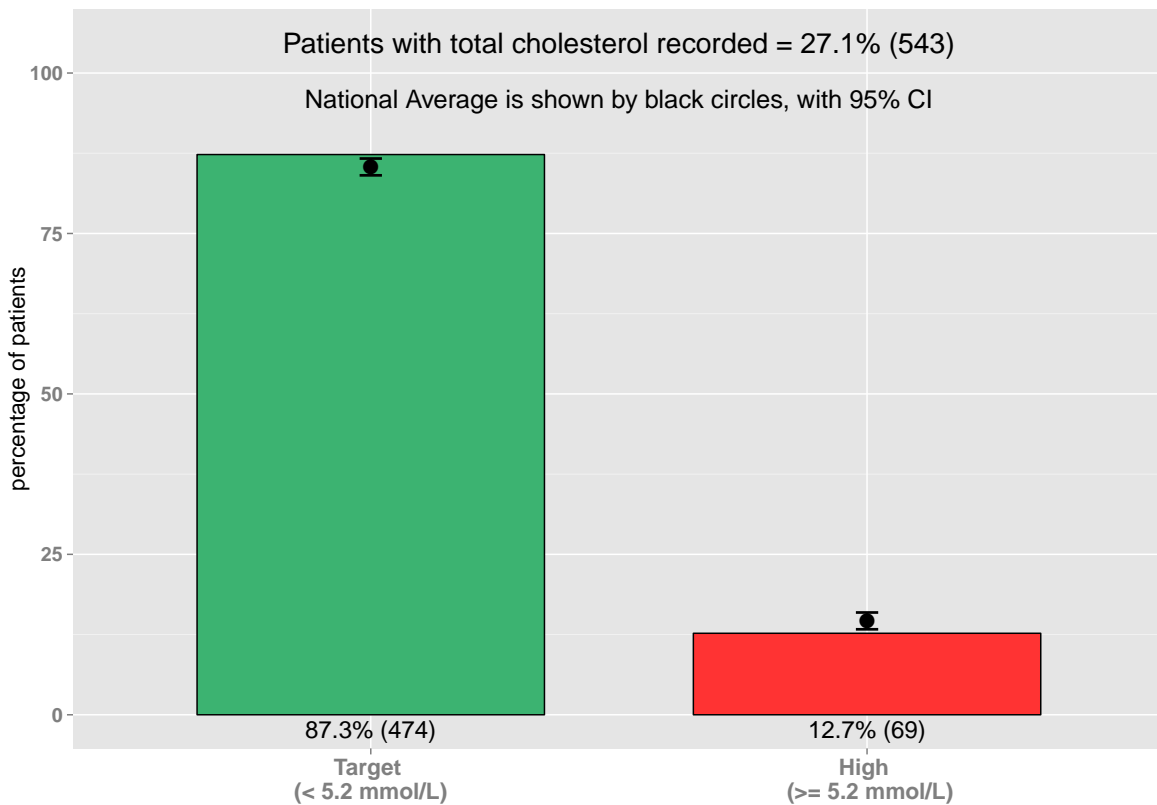






Figure 1.9: LDL Cholesterol

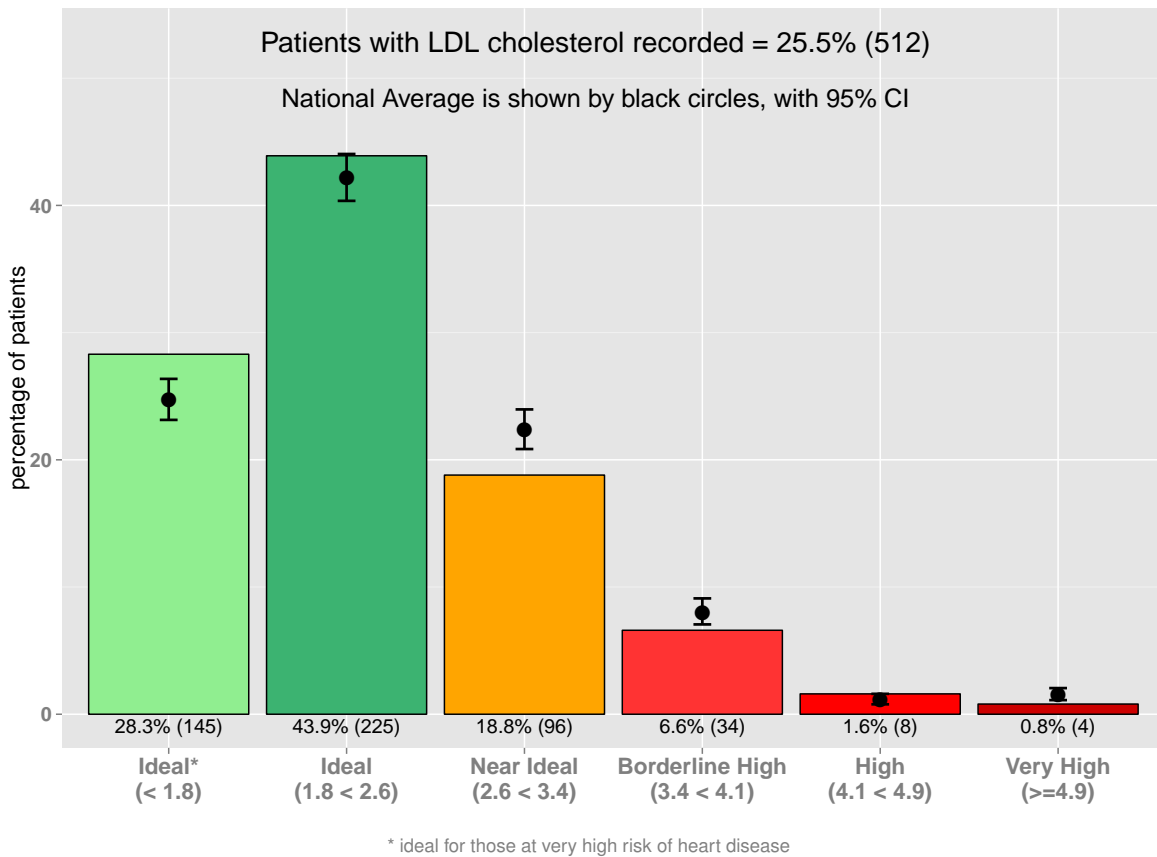


Figure 1.10: Estimated Glomerular Filtration Rate (eGFR)

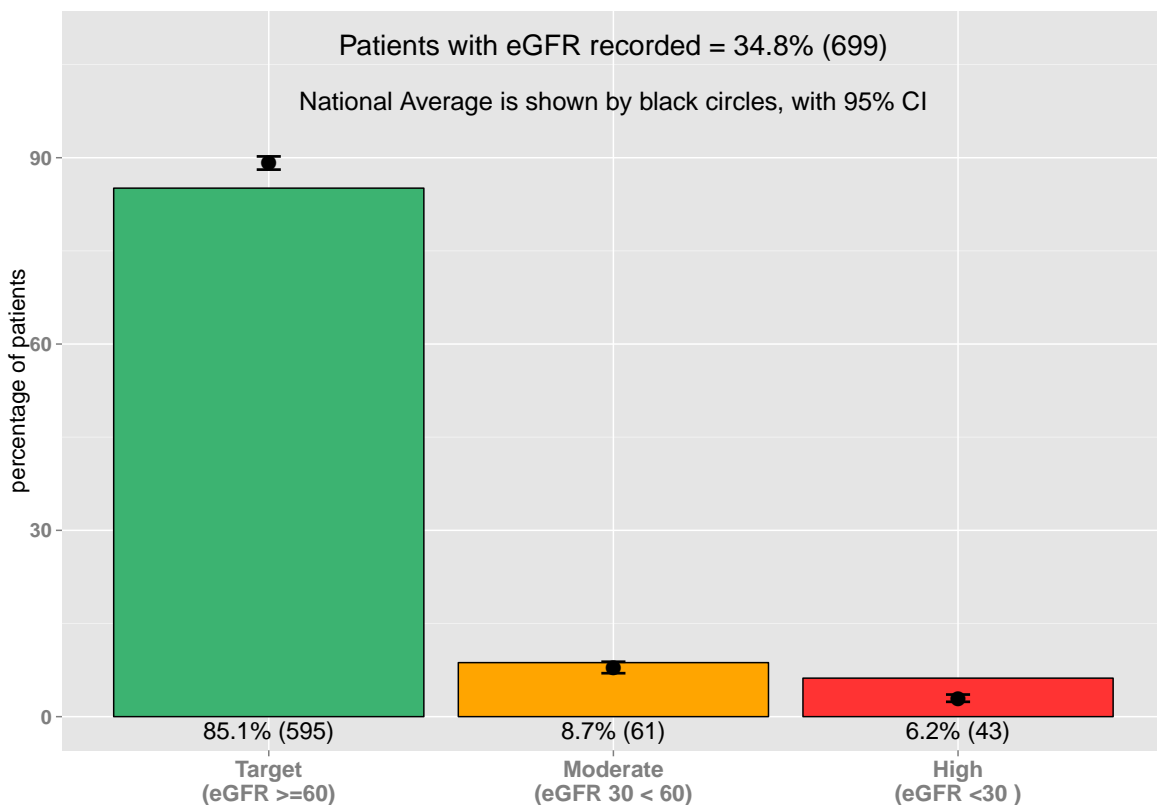




Figure 1.11: Urine Albumin Creatinine Ratio (UACR)

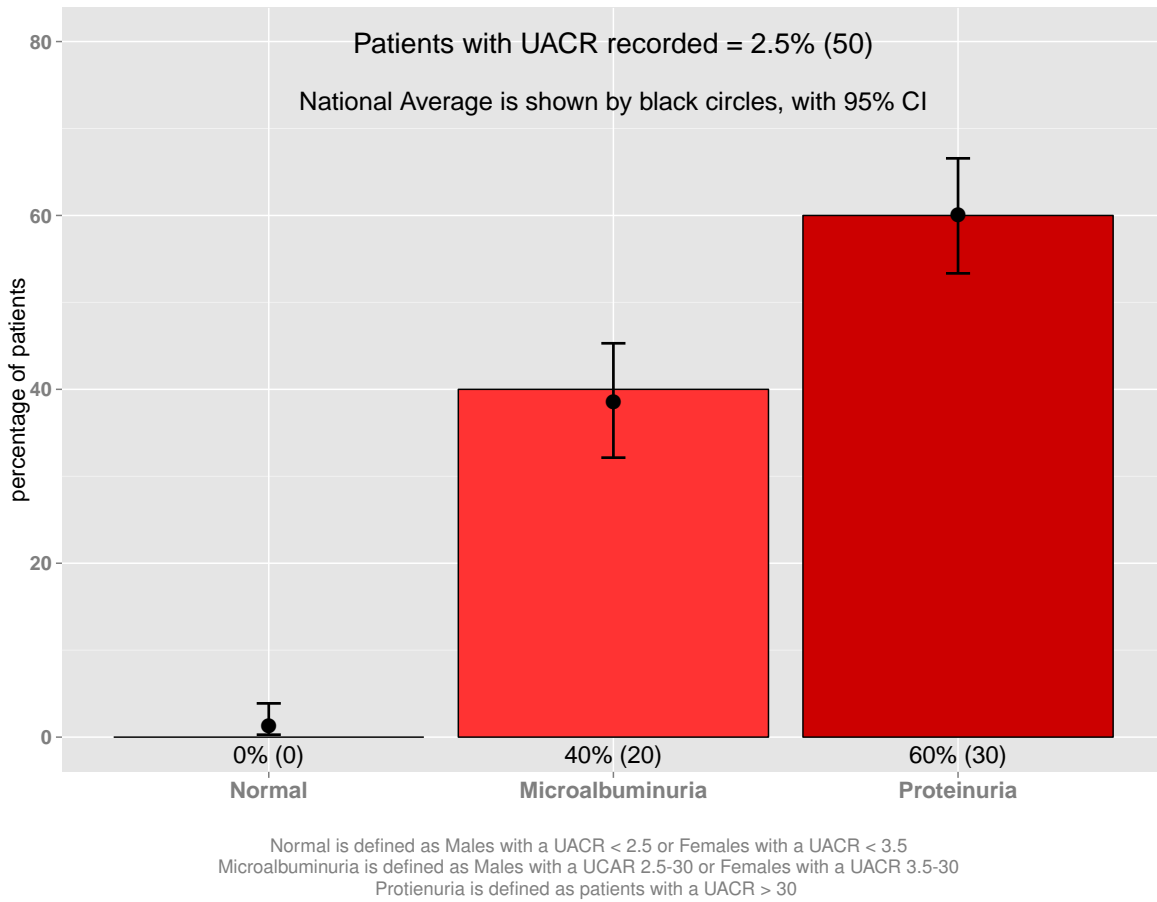


Figure 1.12: Smoking

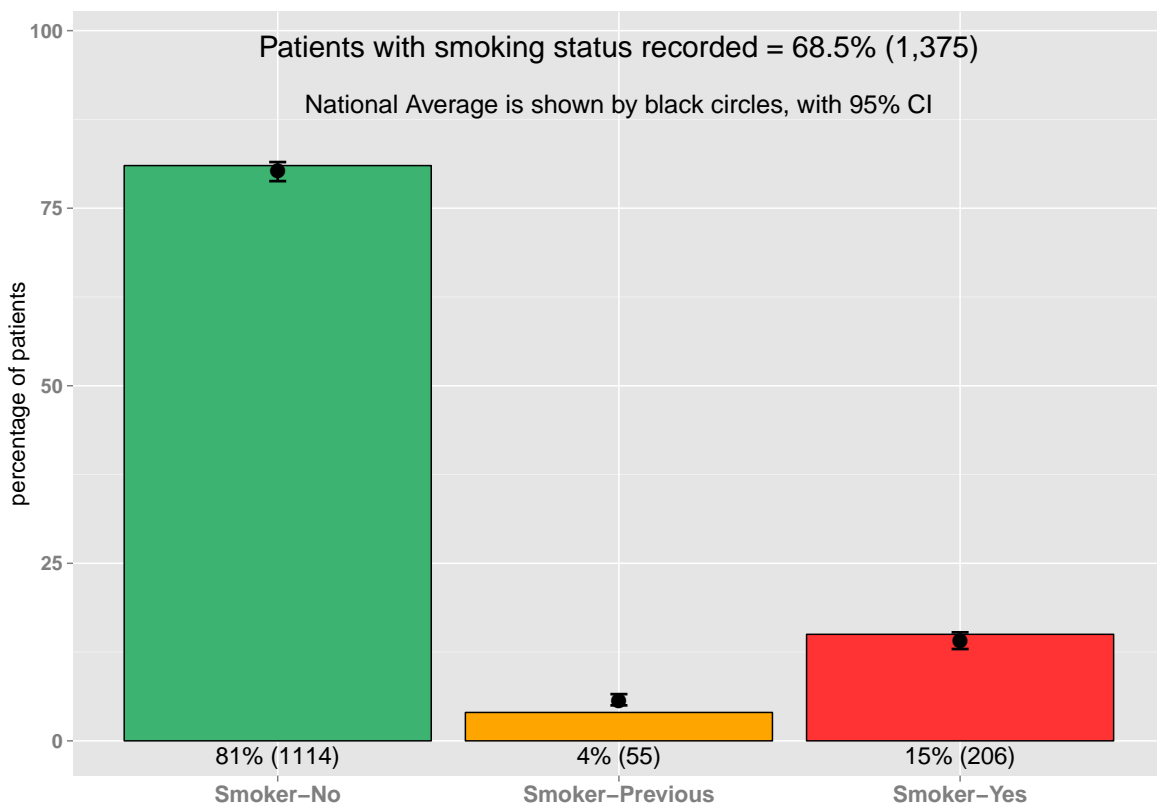




Figure 1.13: Alcohol

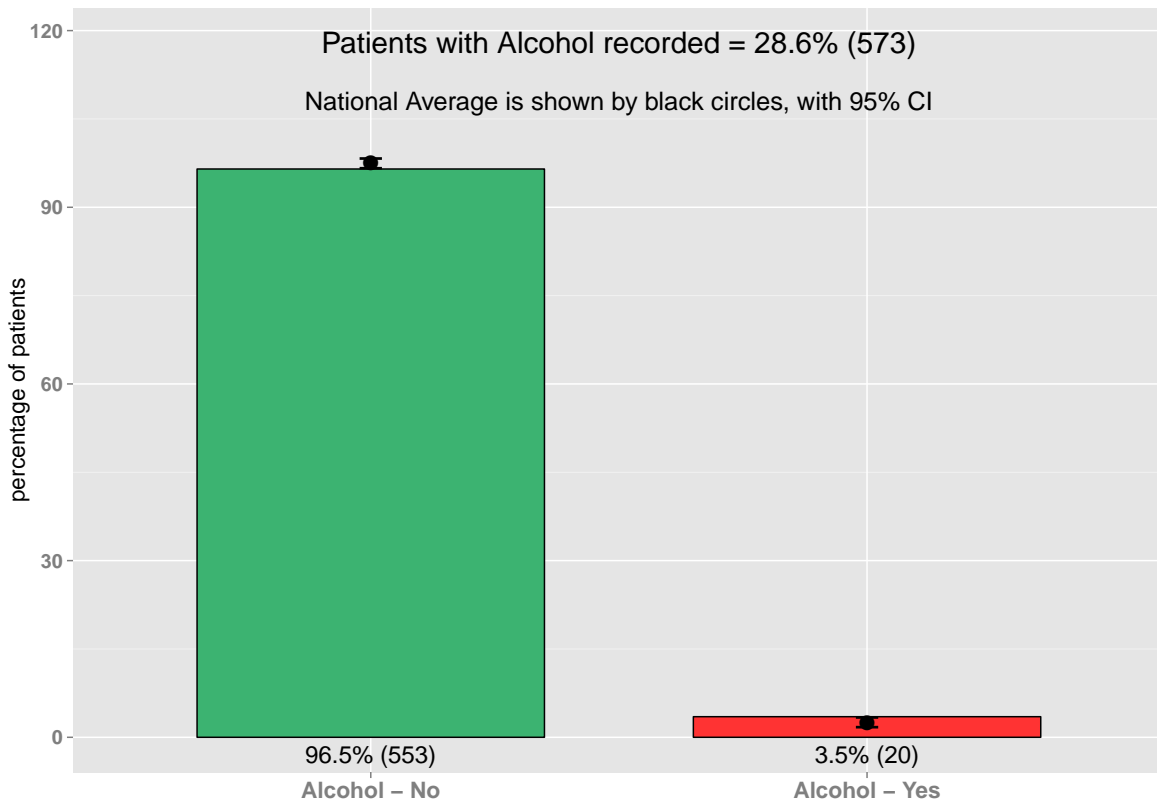
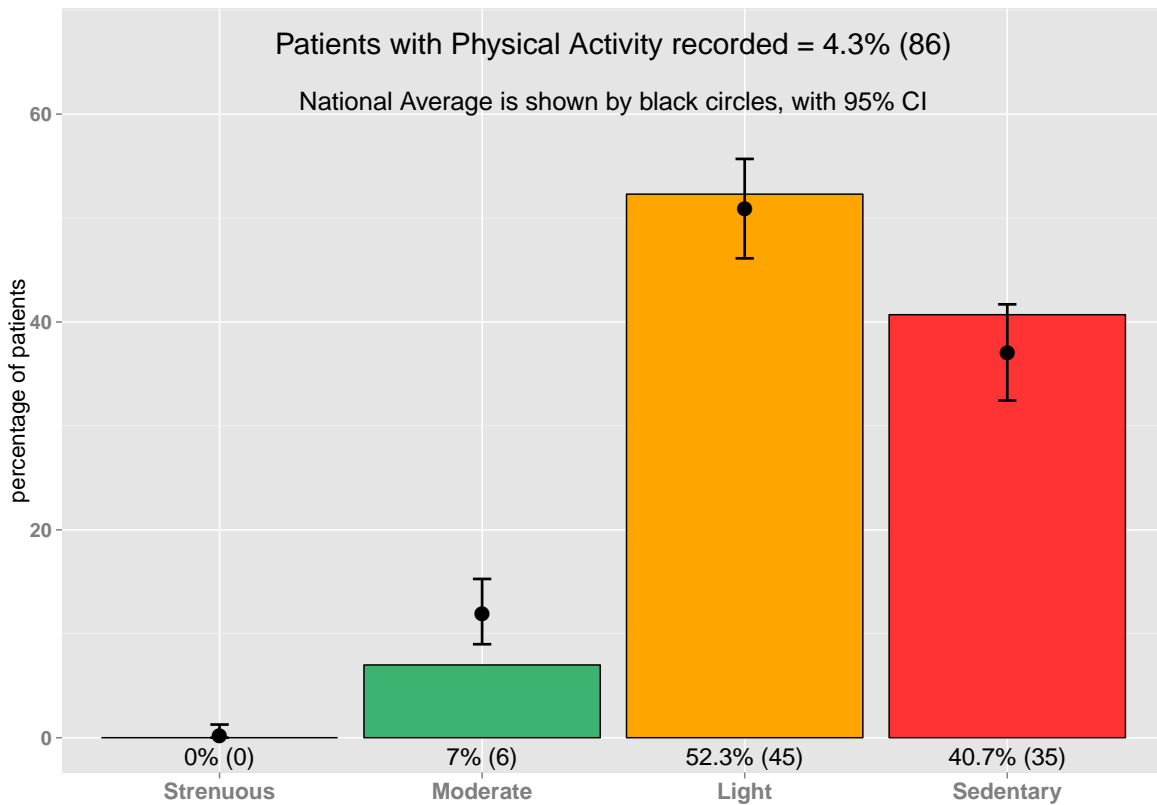


Figure 1.14: Physical Activity





## Chapter 2

# Clinical Outcomes Over Time

- The following section shows the breakdown over time, of each Clinical Outcome
- It currently shows the 3 key measurements : Blood Pressure, Body Mass Index, HbA1c
- Each data point is the percentage of patients having a recorded measurement within the last 15 months
- Each plot has a dotted line representing the median value based on the most recent 15 data points



Figure 2.1: Blood Pressure Over Time

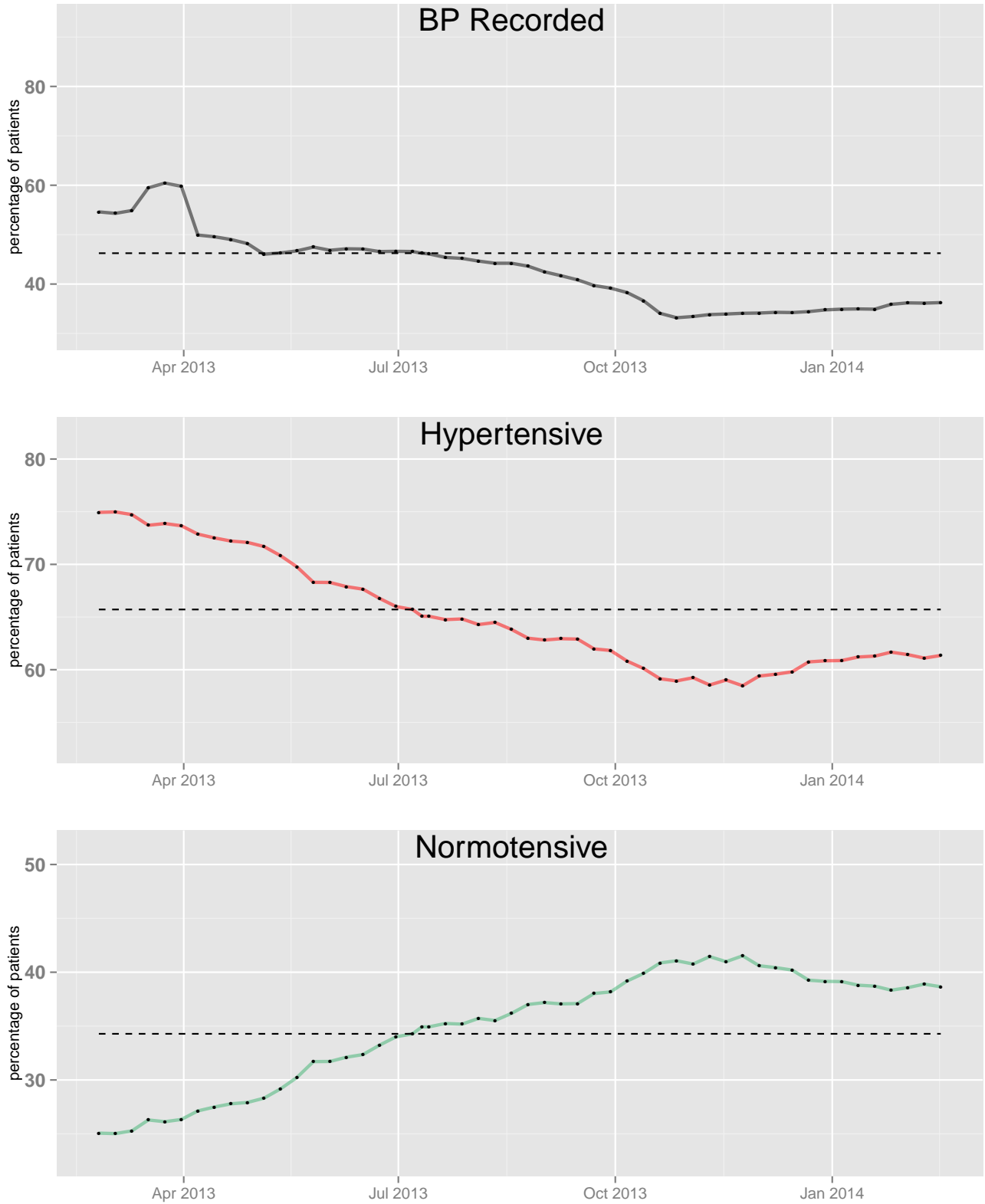




Figure 2.2: HbA1c Over Time

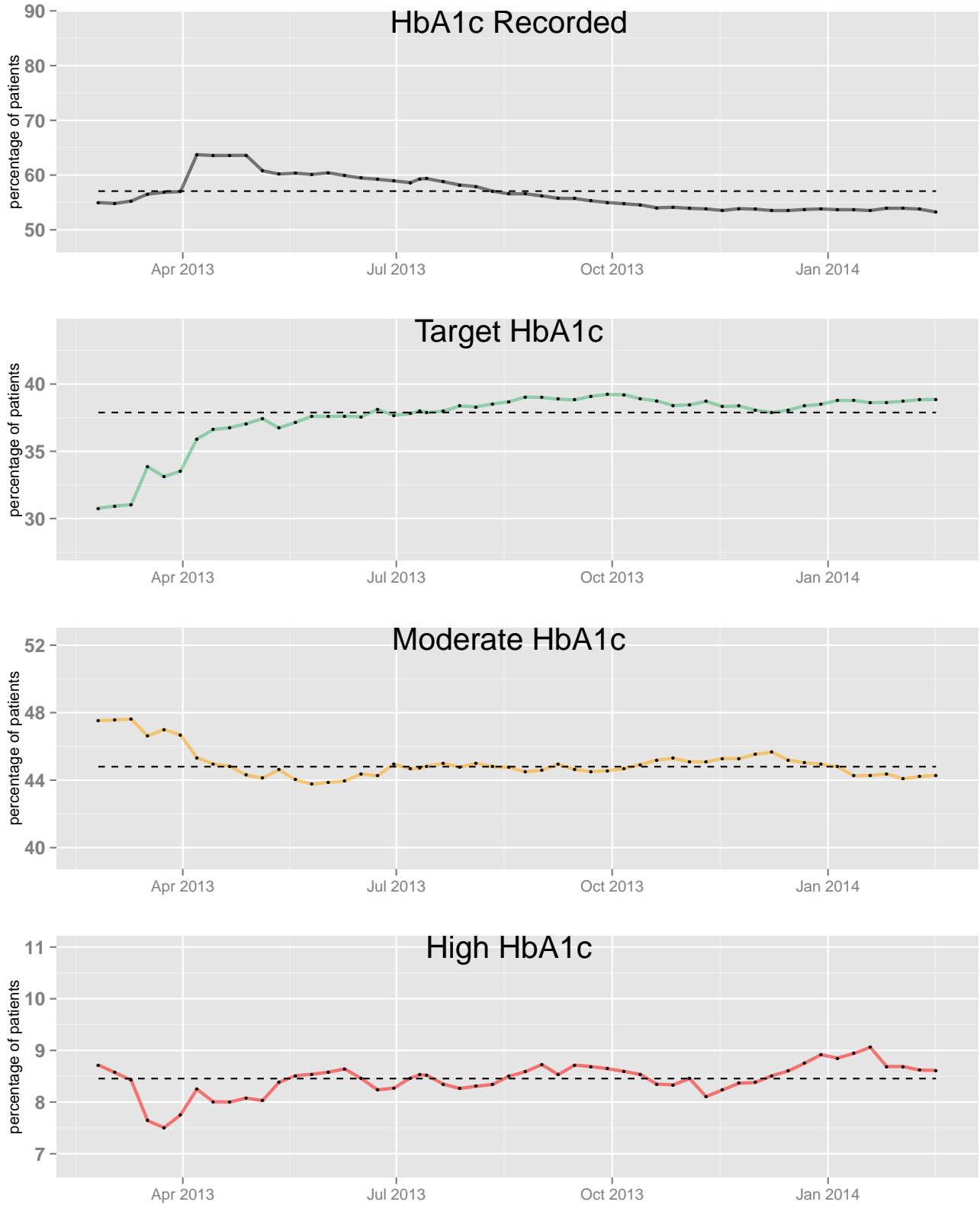




Figure 2.3: BMI Over Time

